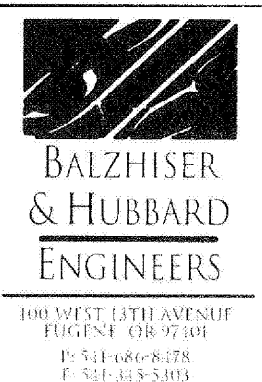
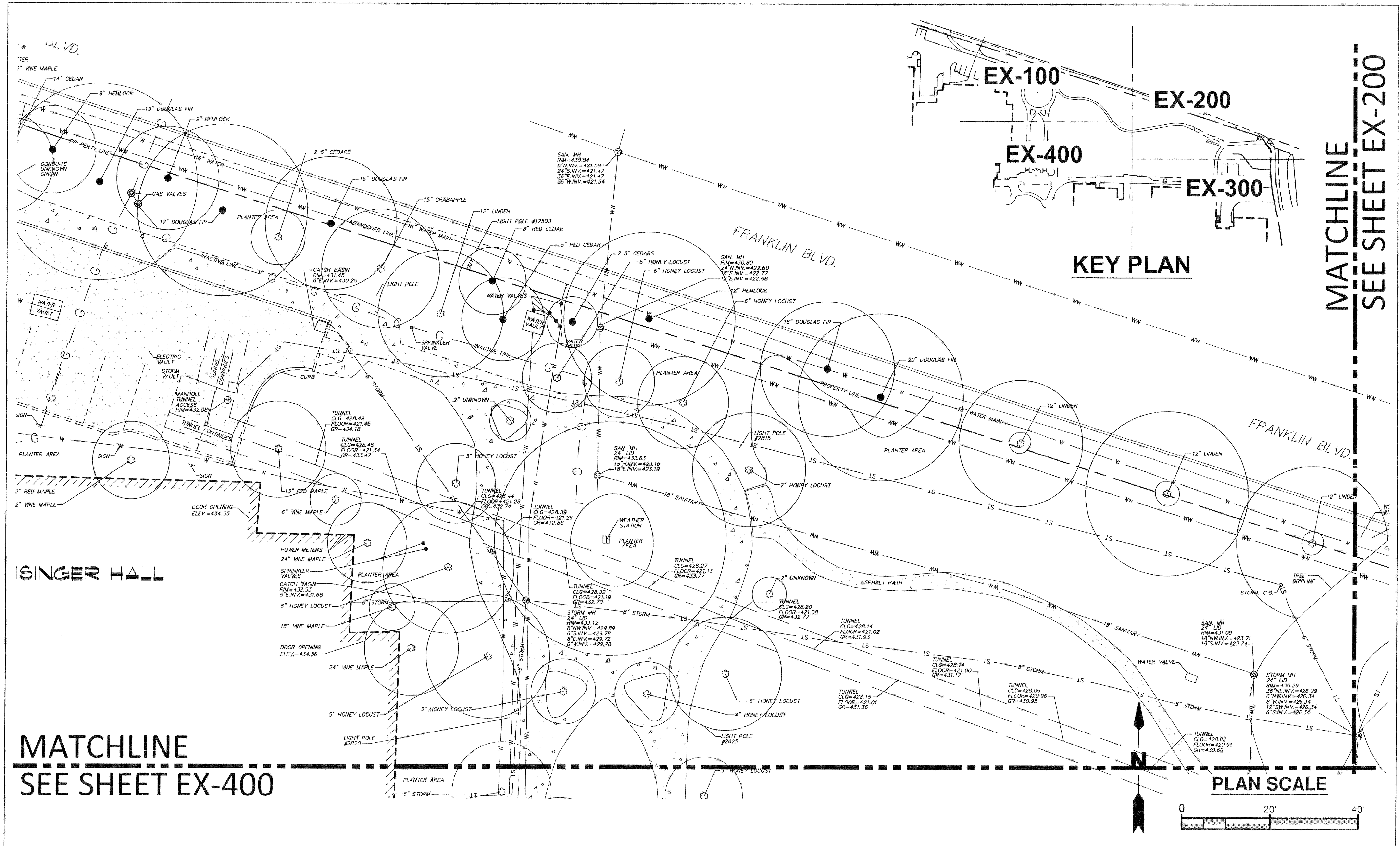


HDR Architecture, Inc. / THA Architecture, Inc.
 HDR | 1001 SW 5th Avenue | Suite 1900 | Portland, Oregon 97204 | 503.423.3800
 THA | 733 SW Oak Street | Suite 100 | Portland, Oregon 97205 | 503.227.1254



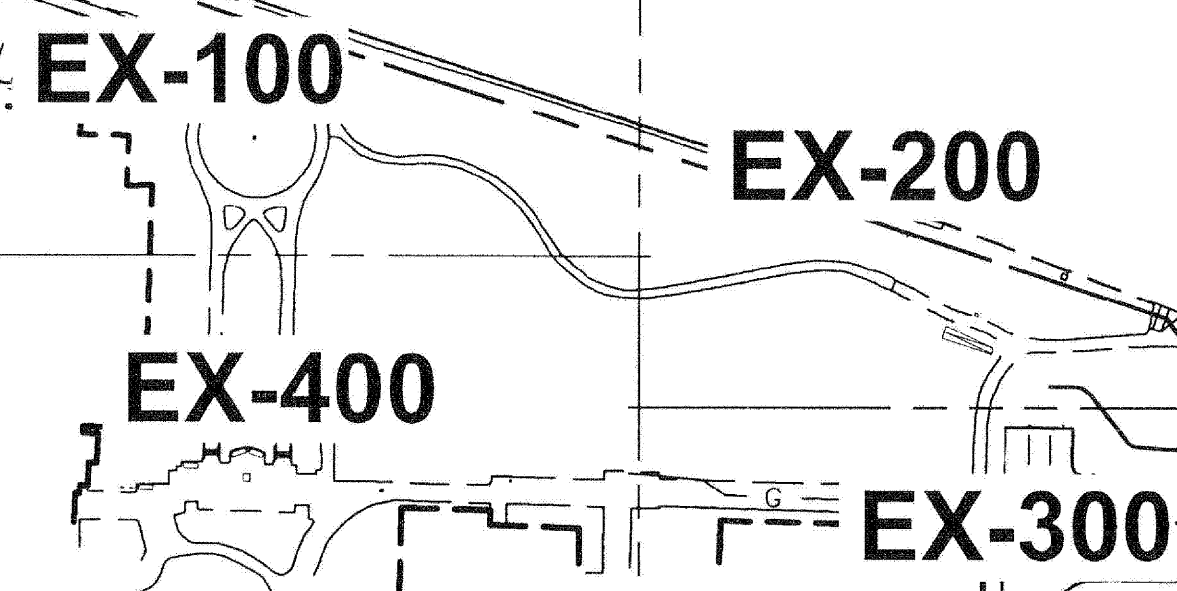
UO LISB
 Lewis Integrative Science Building
 Preliminary Schematic Design
 August 20, 2009

C -001
 Site Utilities Plan



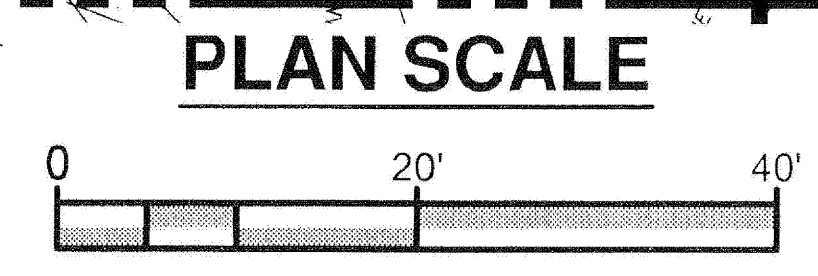
ISINGER HALL

MATCHLINE
SEE SHEET EX-400

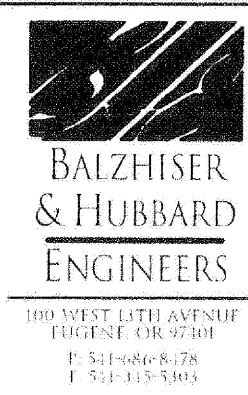


KEY PLAN

MATCHLINE
SEE SHEET EX-200



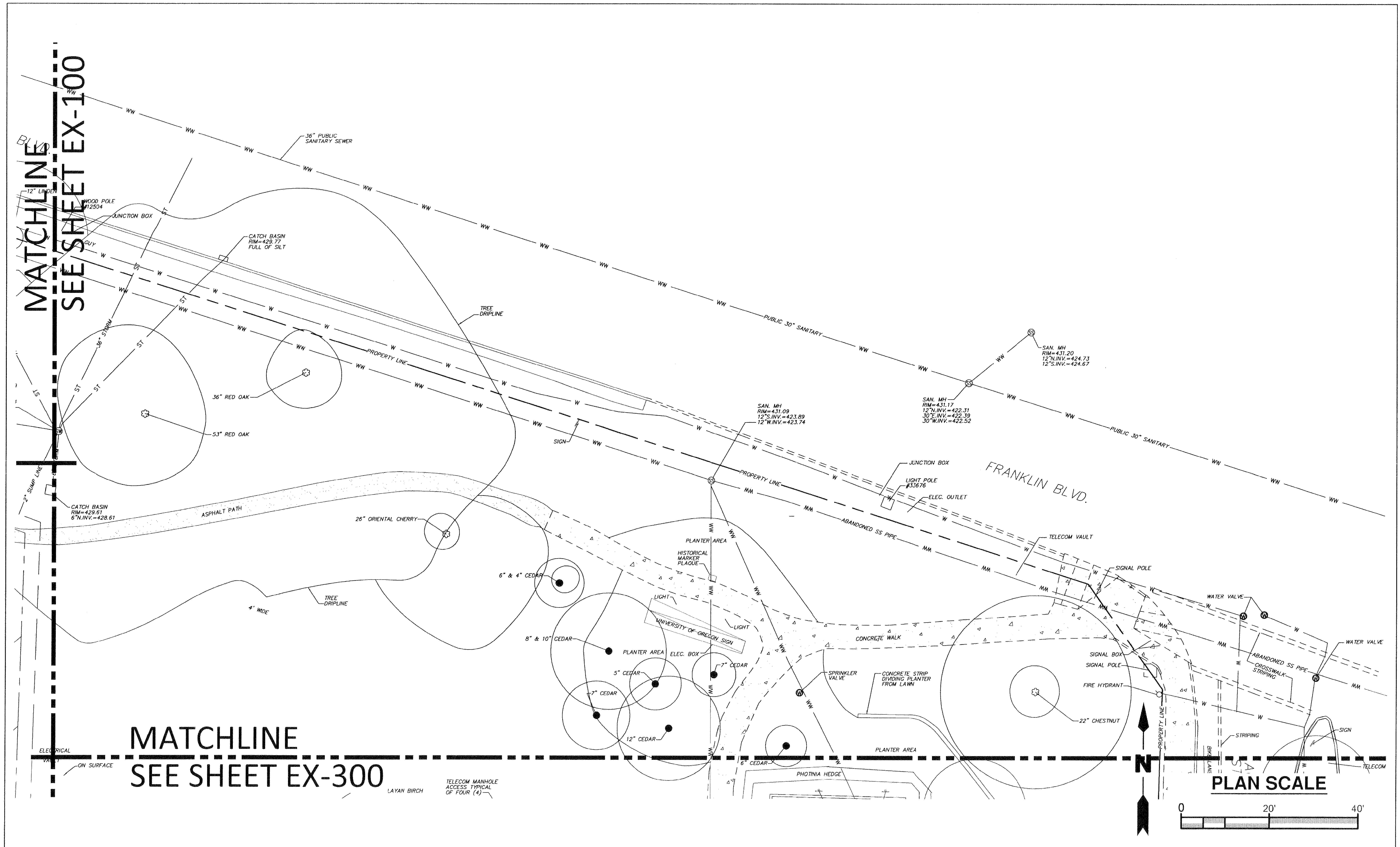
HDR Architecture, Inc. / THA Architecture, Inc.
HDR | 1001 SW 5th Avenue | Suite 1900 | Portland, Oregon 97204 | 503.423.3800
THA | 733 SW Oak Street | Suite 100 | Portland, Oregon 97205 | 503.227.1254



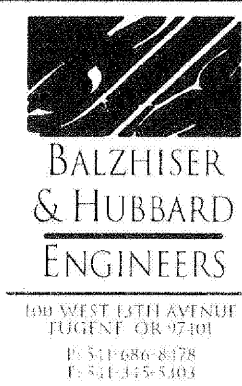
UO LISB
Lewis Integrative Science Building
Preliminary Schematic Design
August 20, 2009

EX-100
SITE SURVEY OF EXISTING CONDITIONS
SITE NORTHWEST QUADRANT

survey of existing conditions.dwg



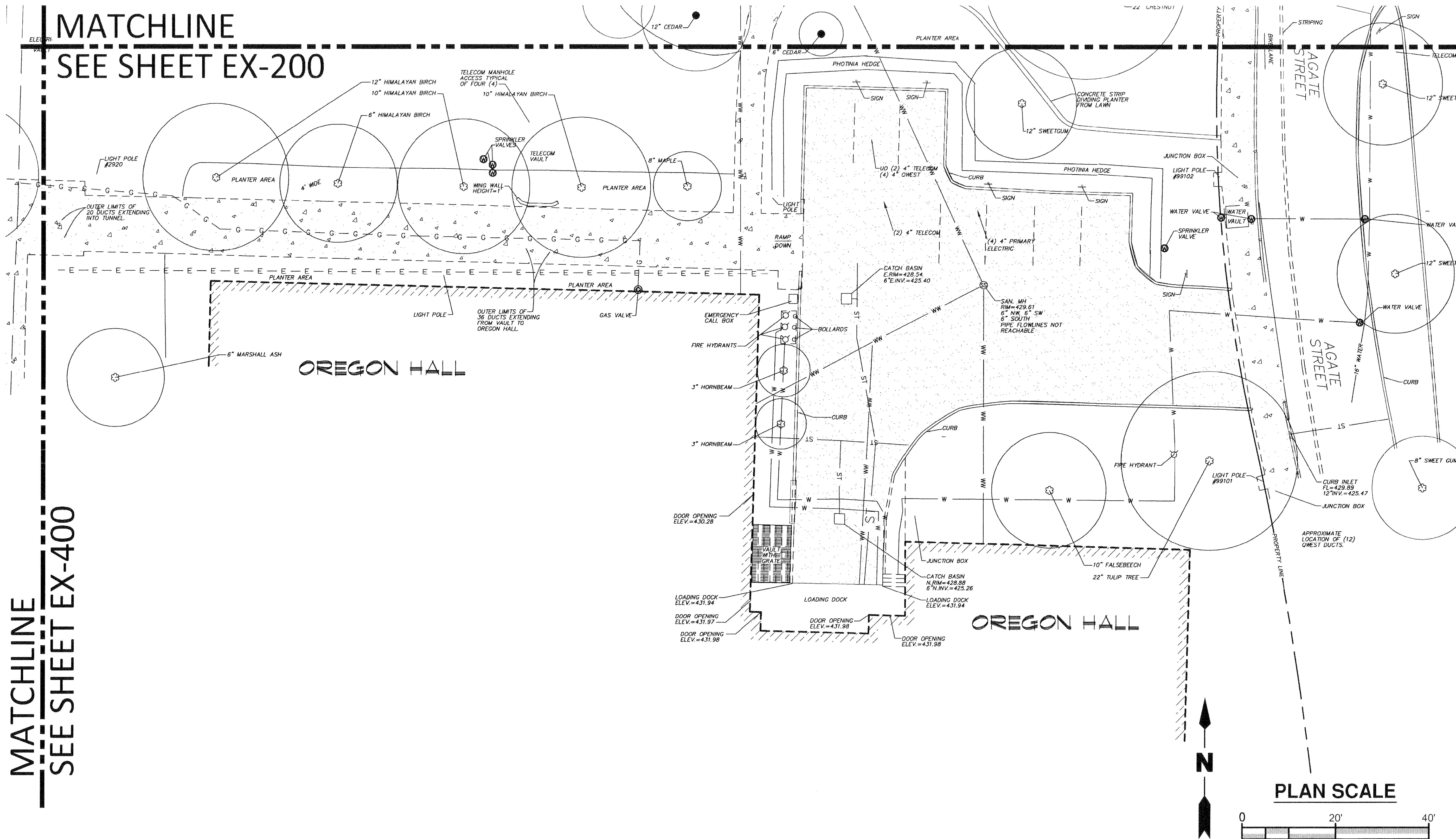
HDR Architecture, Inc. / THA Architecture, Inc.
 HDR | 1001 SW 5th Avenue | Suite 1900 | Portland, Oregon 97204 | 503.423.3800
 THA | 733 SW Oak Street | Suite 100 | Portland, Oregon 97205 | 503.227.1254



UO LISB
 Lewis Integrative Science Building
 Preliminary Schematic Design
 August 20, 2009

survey of existing conditions.dwg
EX-200
 SITE SURVEY OF EXISTING CONDITIONS
 SITE NORTHEAST QUADRANT

MATCHLINE
SEE SHEET EX-200



MATCHLINE
SEE SHEET EX-400

HDR Architecture, Inc. / THA Architecture, Inc.
HDR | 1001 SW 5th Avenue | Suite 1900 | Portland, Oregon 97204 | 503.423.3800
THA | 733 SW Oak Street | Suite 100 | Portland, Oregon 97205 | 503.227.1254



UO LISB
Lewis Integrative Science Building

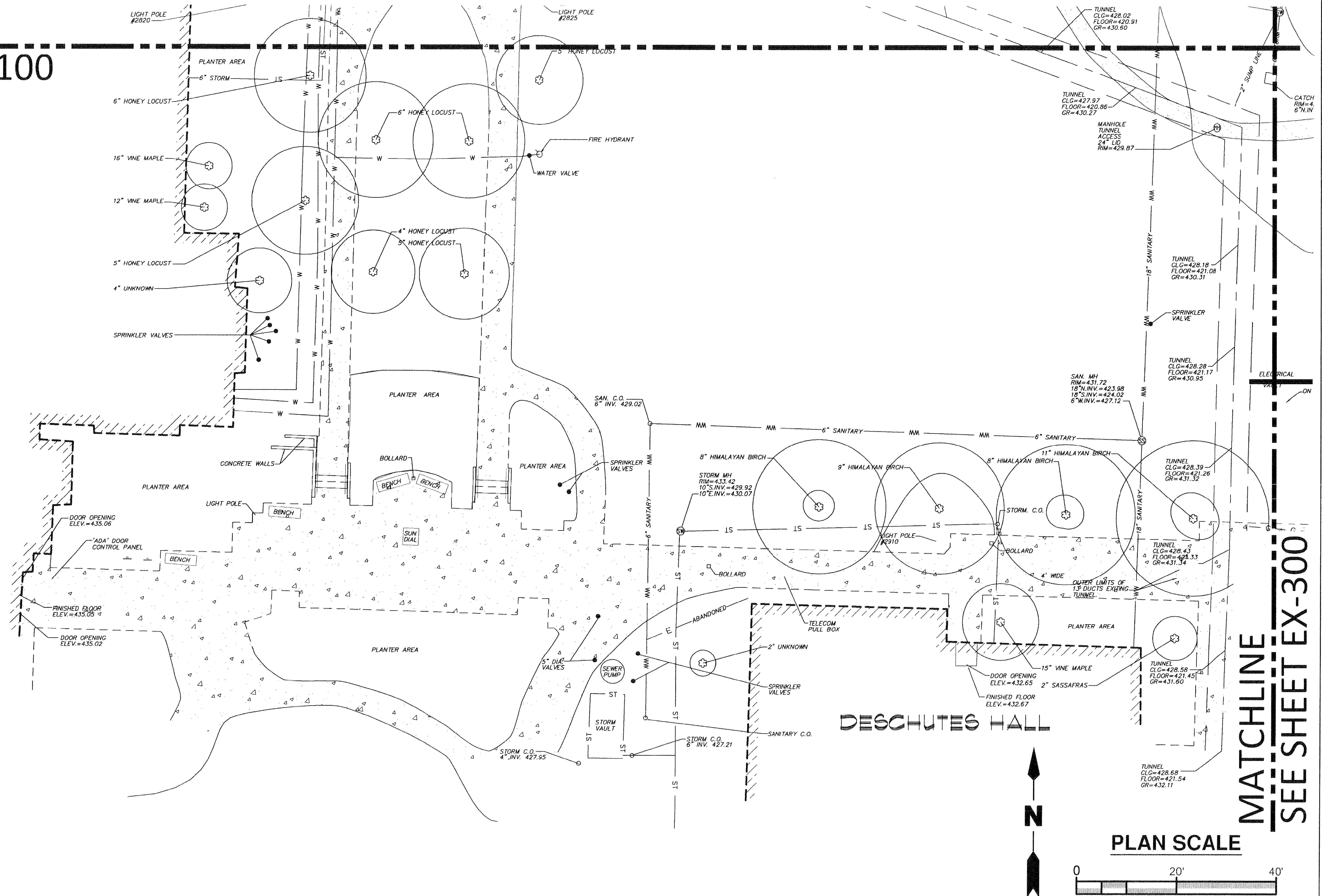
Preliminary Schematic Design
August 20, 2009

SITE SURVEY OF EXISTING CONDITIONS
SITE SOUTHEAST QUADRANT

survey of existing conditions.dwg

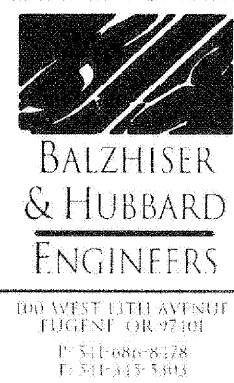
EX-300

MATCHLINE
SEE SHEET EX-100



MATCHLINE
SEE SHEET EX-300

HDR Architecture, Inc. / THA Architecture, Inc.
HDR | 1001 SW 5th Avenue | Suite 1900 | Portland, Oregon 97204 | 503.423.3800
THA | 733 SW Oak Street | Suite 100 | Portland, Oregon 97205 | 503.227.1254



UO LISB
Lewis Integrative Science Building
Preliminary Schematic Design
August 20, 2009

survey of existing conditions.dwg
EX-400
SITE SURVEY OF EXISTING CONDITIONS
SITE SOUTHWEST QUADRANT